

## **Unintentional File & Disk Sharing**

Windows actually makes it easy to share hard drives and printers over a network, a convenience and efficiency for those who need it.

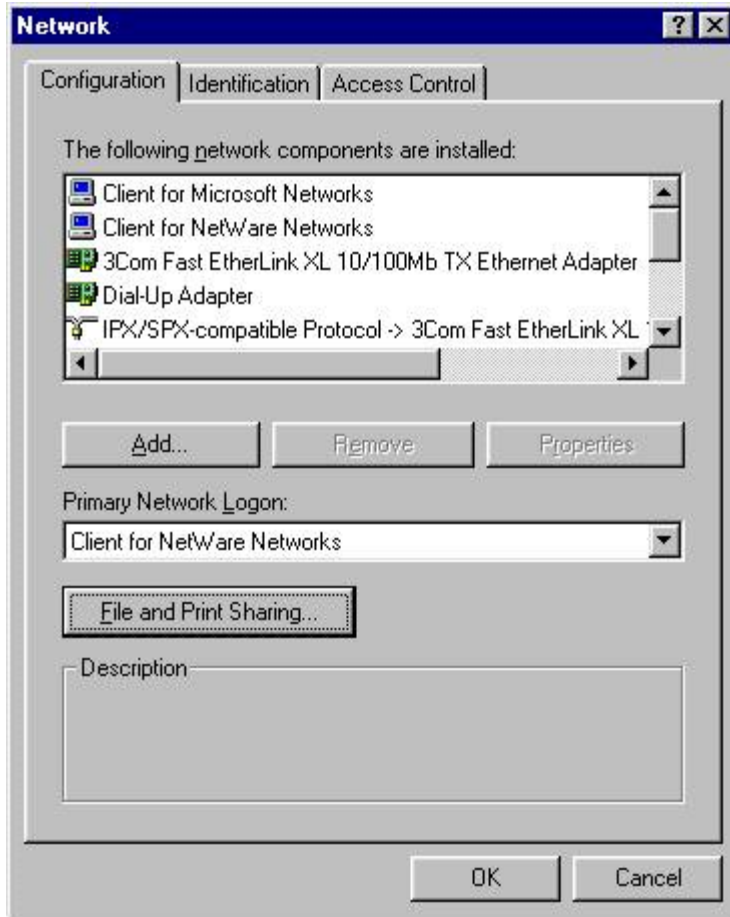
However, users who set up Windows in a home or office network for file sharing can also unconsciously make their files accessible on the Internet by not choosing a file-sharing password. Without specifying a password, the user makes the hard drive open to anyone who learns the computer's Internet (IP) address.

Programs that scan networks for such hard drives -- known as "open shares"-- have been available freely for some time.

- File Sharing on Windows 95 and 98
  - File Sharing on Windows 2000, NT and XP
- 

### **File Sharing on Windows 95 and 98**

- Right-click the Network Neighborhood icon
- Select Properties
- When the window below opens, click File and Print Sharing



- When the window below opens, be sure both sharing options are off.



---

## File Sharing on Windows 2000, NT and XP

The steps below describe how to configure a Windows NT/2000, XP computer so that you do not unintentionally share resources over the network.

There are steps detailing how to permanently disable sharing resources and steps to just temporarily prevent sharing a disk drive. With the temporary change, after a restart the folder's icon indicates that it is still being shared. This is because Windows NT, 2000 and XP create "administrative shares" each time the computer starts, but by default only a user who is a member of the local Administrators group can gain access to an administrative share.

### **Temporarily Block the Sharing of Your C-drive**

- On your Windows Desktop, right click on My Computer
- Click on Explore
- Right click on Local Disk (C:)
- Click on Sharing
- Click Do not share this folder. (Keep in mind that Windows NT/2000 will share the drive again once the computer is restarted.)

### **Permanently Disable File and Printer Sharing**

- Click Start
- Point to Settings
- Click Control Panel
- Double-click Administrative Tools
- Double-click Services
- Double-click Server
- For Startup Type, select Disabled
- Click Apply
- Click OK